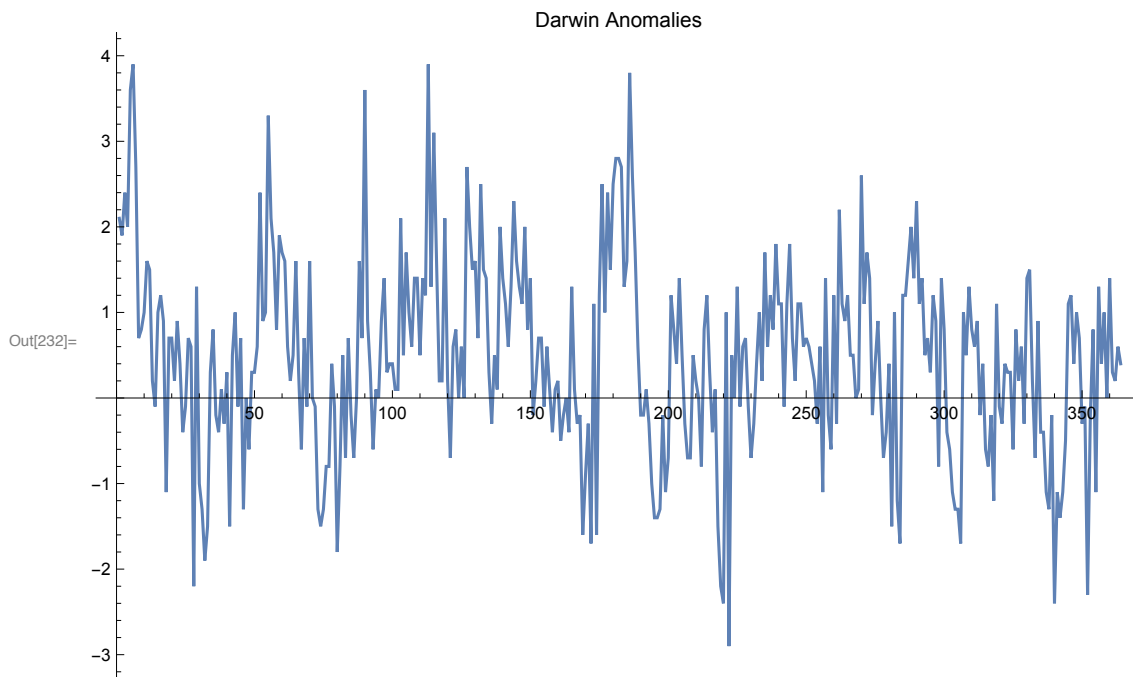


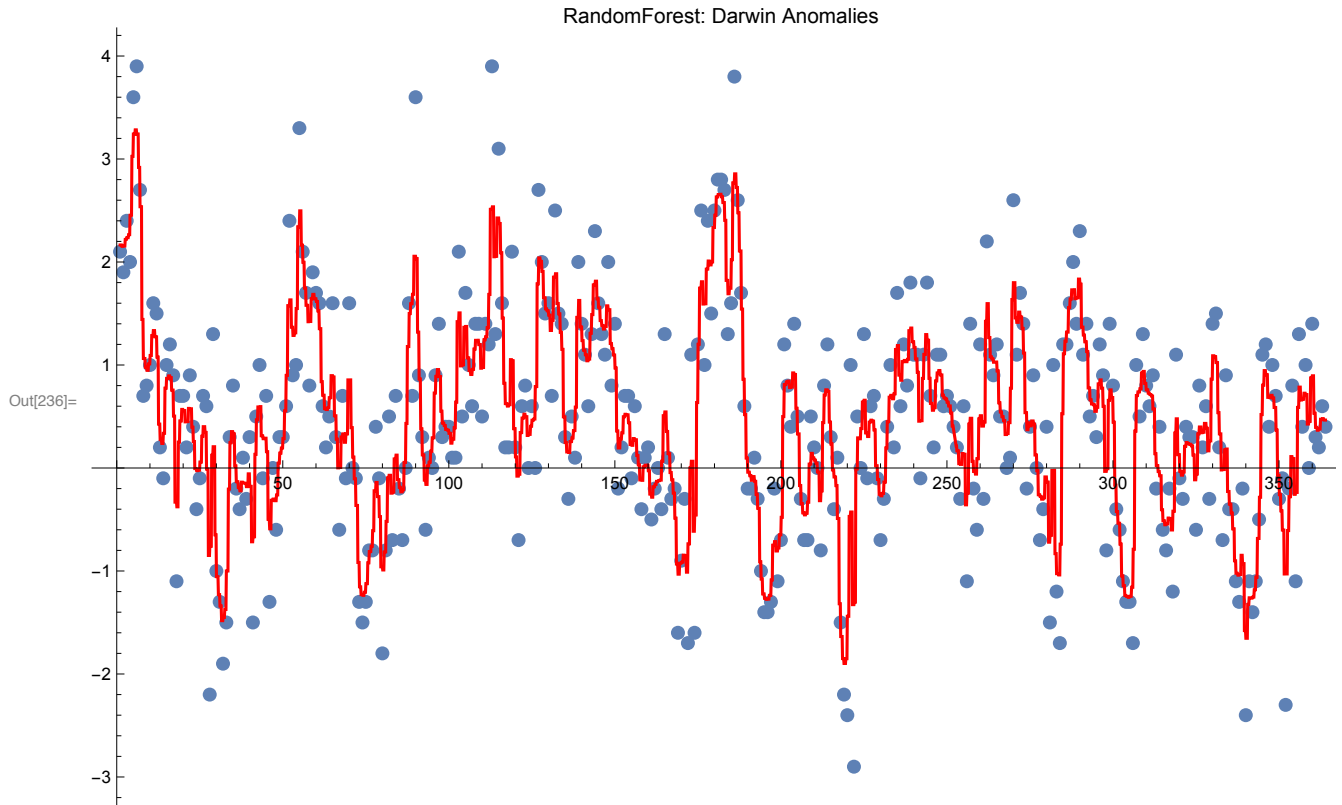
Mathematica 10.0.1 Machine Learning for Prof. Baez

dara@lossofgenerality.com

For the sake of example, just tried the time-series for Darwin's anomalies:

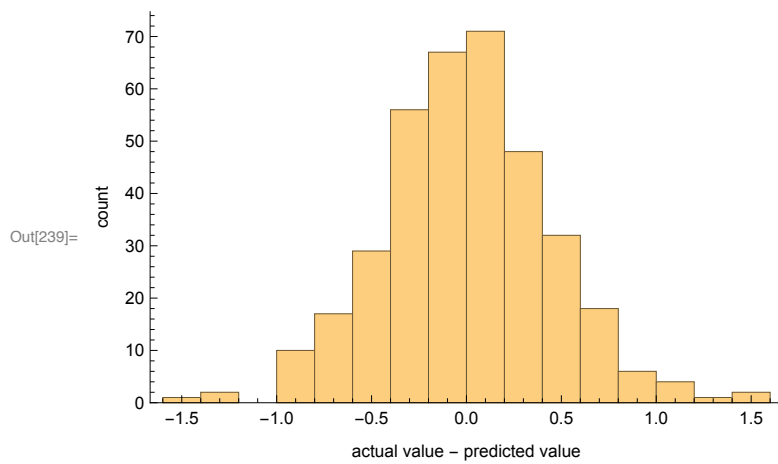
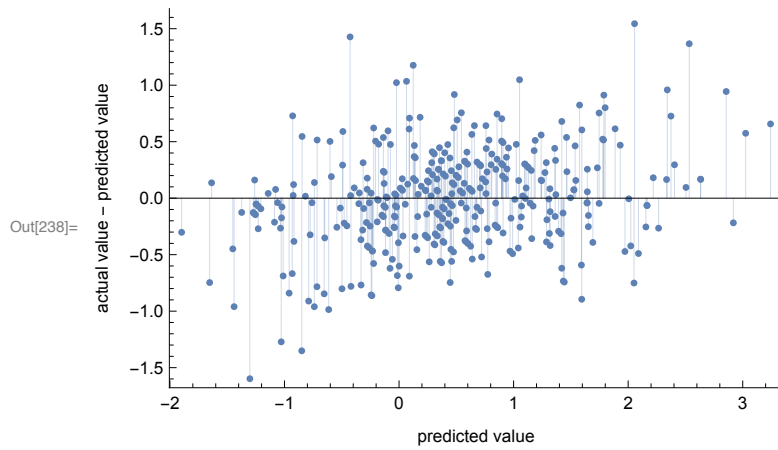
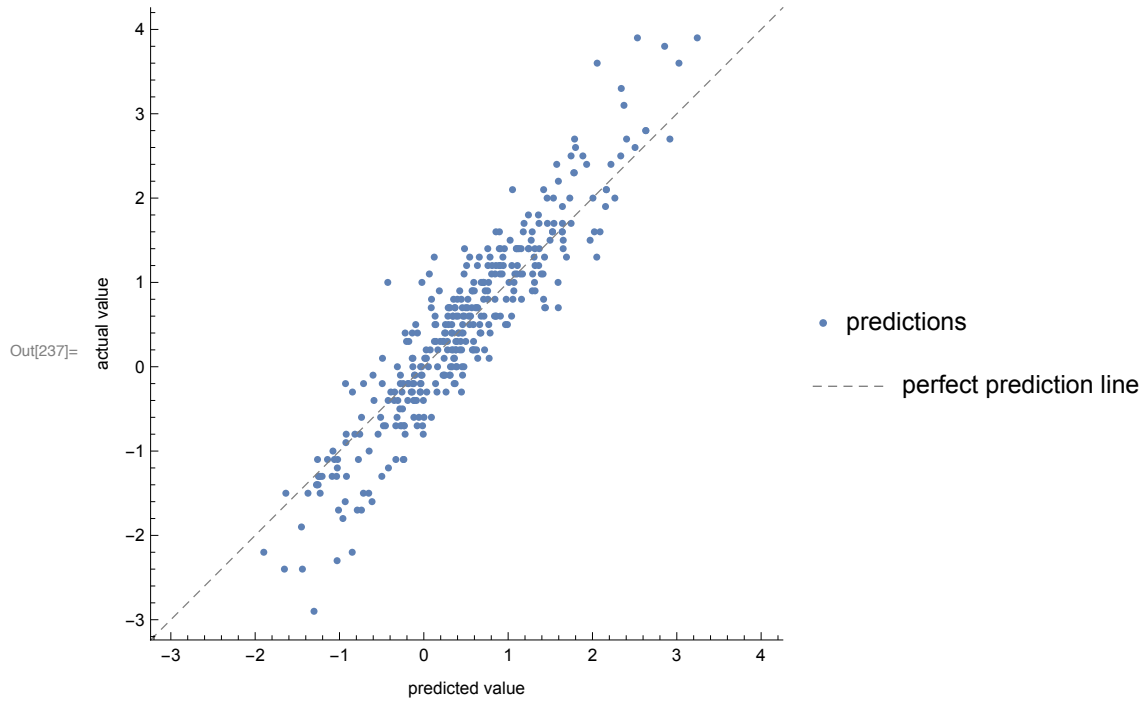


Random Forest



Out[214]=

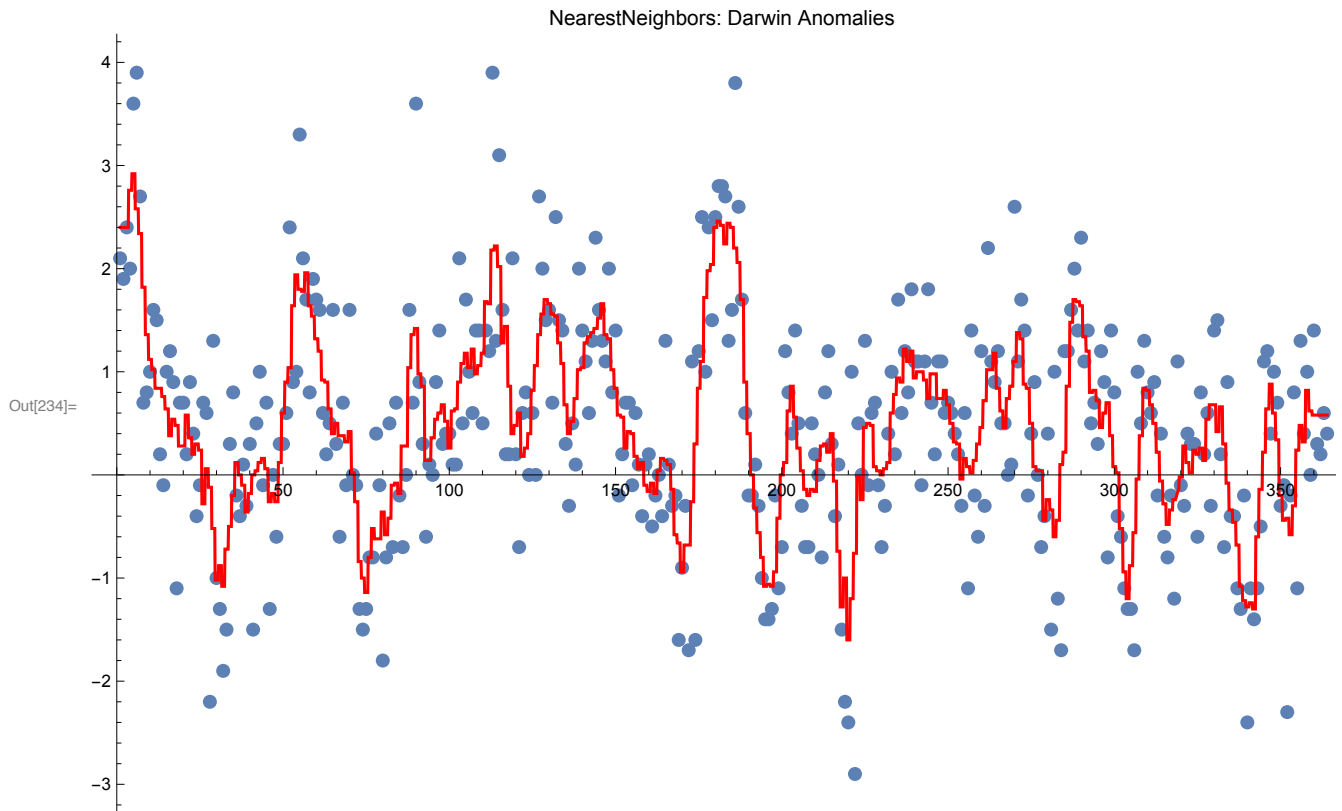
Predictor information	
Method	Random forest
Number of features	1
Number of training examples	364
Number of extracted features	1
Number of trees	200



Standard Deviation

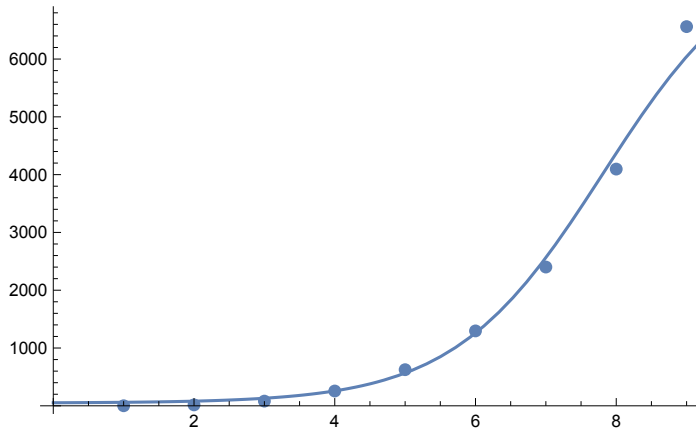
0.44628

Nearest Neighbors

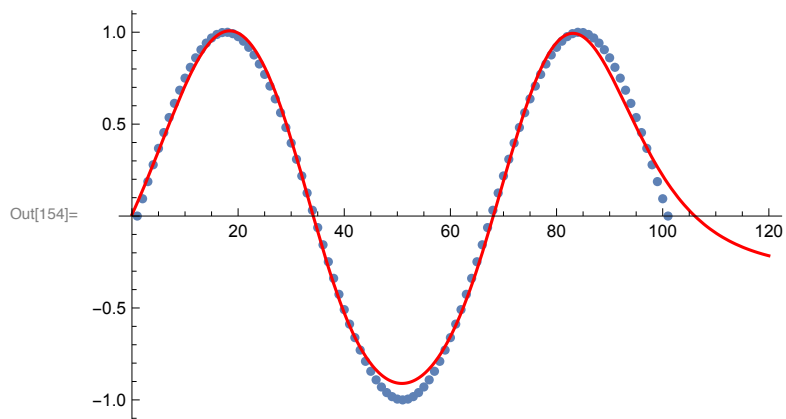


Neural Network: FIXME

Fitting x^4



Fitting Sinus



Has trouble with the Darwin Anomalies data, I am sure it is an implementation issue, since it looks like a very bad fit, worst case scenario I use my own C code:

